



**SOLID WASTE
AUTHORITY**
RECYCLE



Recycle the Season, Celebrate the Reason!

'Tis the season to be green! As the holidays approach, let's celebrate our community and keep the planet merry and bright. This month, we're spreading cheer with fun tips and resources to help you recycle right and keep waste out of the landfill. Let's make it a happy, green holiday!

The MRF continues to make great strides in turning recyclables into new resources for the community. Check out the full update later in this newsletter to see how your recycling is making a difference this holiday season!

The Fairhope CHaRM has had a fantastic start, welcoming many customers in its first few months and collecting a steady stream of hard-to-recycle items along with single-stream materials. Over at the Magnolia CHaRM, we're thrilled to see participation growing—proof that our community is making the season brighter and greener!

When the holiday winds down and you're taking down your Christmas decorations, remember to recycle your live Christmas tree instead of tossing it.

On November 20th, University of South Alabama students toured the Waste and Recycling Adventure Center to see the MRF in action and learn how recycling keeps our community sustainable.

With the holidays quickly approaching and gift shopping underway, check out our Sustainable Gift Guide for ideas on eco-friendly gifts this Christmas.

After opening gifts and enjoying your holiday meals, be sure to check out our Holiday Recycling Dos and Don'ts to learn the best ways to manage your waste.

Not sure what to do with leftovers after your holiday meals? Check out our Holiday Food Waste Reduction Tips later in the newsletter.

As the year comes to a close and New Year's resolutions are on your mind, start Ringing in the Year Green with our top tips!



In This Newsletter Issue:

MRF Update

CHaRM Update

Christmas Tree Recycling

Sustainability Shoutout

Sustainable Gift Guide

Holiday Recycling Do's and Don'ts

Holiday Food Waste Reduction Tips

Start the Year Green

MRF Update



As the year comes to a close, the holiday season brings an influx of cardboard from shopping and gift packaging. In November, our team processed 298.1 tons of material at the MRF and successfully exported 384.39 tons to recycling end markets.

These numbers highlight the community's commitment to recycling and show how individual efforts add up to a big impact. By properly sorting and recycling your materials, you help reduce waste, conserve resources, and keep the holiday season both joyful and sustainable.

CHaRM Update

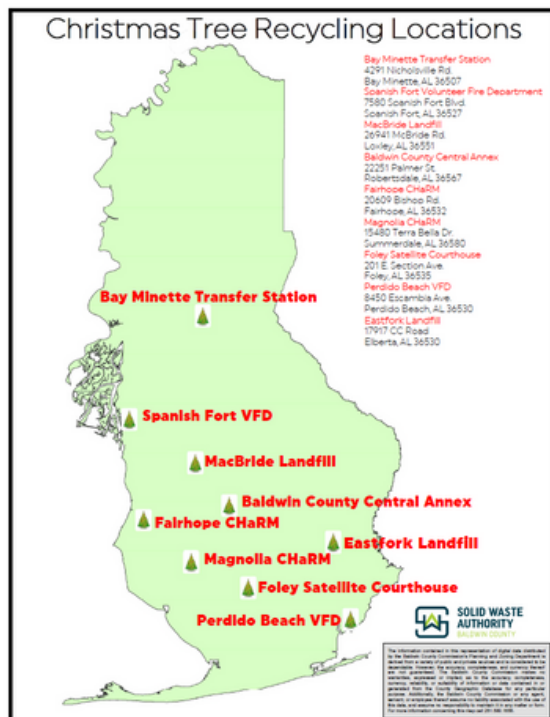


With our first two CHaRMs now open, we're thrilled to see such enthusiastic participation from the community at both locations. The Fairhope CHaRM has collected 182 hard-to-recycle items, while the Magnolia CHaRM has taken in 114 hard-to-recycle items so far. These numbers highlight the community's commitment to responsible recycling and keeping hard-to-recycle materials out of landfills.

We encourage everyone to continue bringing in items that are difficult to recycle at home, helping make our region cleaner, greener, and more sustainable.

Christmas Tree Recycling

With the Christmas season coming to an end, if you have a live Christmas tree to dispose of, you can bring it to one of the Christmas Tree recycling sites marked on the map below. Please make sure to remove all ornaments, lights, decorations, etc. from tree before recycling.



Sustainability Shoutout



On November 20th, students from the University of South Alabama visited the Waste and Recycling Adventure Center for an educational tour. During their visit, they learned about the importance of recycling, how materials are sorted and processed, and the behind-the-scenes operations of the MRF.

The tour offered a hands-on look at the recycling process, highlighting how individual efforts in the community contribute to a cleaner, more sustainable environment.

Sustainable Gift Guide

Give gifts that last—and create less waste

 **Choose reusables:** Water bottles, travel mugs, totes, food storage

 **Go eco-friendly:** LED bulbs, houseplants, natural cleaners

 **Gift experiences:** Events, classes, or local gift cards

 **Shop smart:** Support local, choose minimal packaging

 **Wrap sustainably:** Reusable bags, fabric wrap, recycled paper

Holiday Recycling DOs and DON'Ts

DO Recycle

Plain wrapping paper (no glitter, foil, or metallic shine)

Cardboard boxes from gifts and online orders (flatten first)

Paper gift bags (remove handles)

Holiday cards without glitter, foil, or batteries

DON'T Recycle

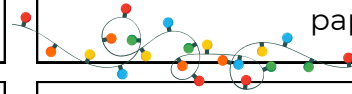
Glittery, foil, or metallic wrapping paper

Bows, ribbons, tinsel, or garland

Plastic wrapping, bubble wrap, or cellophane
Christmas lights, extension cords, or electronics (take to CHaRM)


Artificial Christmas trees


Food-soiled items (greasy pizza boxes, used paper plates)




Holiday Food Waste Reduction Tips

The holidays are full of delicious meals—but they can also create extra food waste. These tips will help you enjoy festive feasts while reducing waste and making the most of your leftovers.

 **Plan & Portion:** Estimate portions and fill half your plate with veggies.

 **Store Smart:** Label leftovers, refrigerate or freeze promptly.

 **Get Creative:** Turn extras into soups, casseroles, sandwiches, or homemade broth.

 **Compost & Donate:** Compost scraps and donate unopened non-perishables.

Tip: Small planning steps make your holidays tasty and waste-free!



Start the Year Green

Start the Year Green

Kick off 2026 by making eco-friendly habits part of your routine! A fresh year is the perfect time to set sustainable goals and reinforce good recycling practices.

Make a Recycling Resolution

Review SWDA Recycling List to see what can and cannot go in your bin.

Flatten cardboard, rinse containers, and keep recyclables clean and dry.

Reduce Food Waste

Plan meals, store leftovers properly, and compost scraps when possible.

Choose Reusables

Use reusable bags, bottles, mugs, and utensils to cut single-use waste.

Set Green Goals

Support local and sustainable products. Commit to energy-saving habits, like turning off lights or using LED bulbs.

Tip: Start small now—simple changes can make 2026 a greener year for your home and community!

Sustainable New Years Party

Ring in 2026 without creating extra waste! Small changes make celebrations eco-friendly and fun.

 **Use Reusables:** Plates, cups, utensils, and décor

 **Eco-Friendly Decorations:** Natural, DIY, or reused materials

 **Mindful Food:** Plan portions and save leftovers in reusable containers

 **Save Energy:** Use LED lights and turn off unused electronics

 **Green Favors:** Give eco-friendly gifts or experiences

Tip: Small changes make your celebration festive and eco-friendly!

Holiday Schedule

Christmas Holiday

Thursday, December 25, 2025

ALL LANDFILLS CLOSED
MRF AND ALL CHARMS
CLOSED

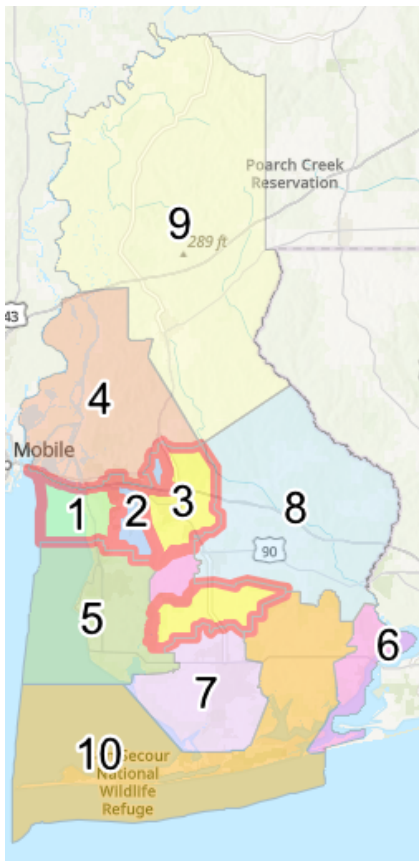


New Year's Holiday

Thursday, January 1, 2026

ALL LANDFILLS CLOSED
MRF AND ALL CHARMS
CLOSED

Curbside Recycling



Want curbside recycling but not sure if it's available in your area? Check out this map to see when service will start near you.

Curbside recycling makes it easy to reduce waste and protect the environment—sign up today and start recycling right at your doorstep!

1. Daphne (inside/outside city limits, west of 181 and south of I-10) **Active**
2. Belforest, Daphne (inside/outside city limits, east of 181 and north I-10), Malbis, and Spanish Forts Stonebridge **Active**
3. Loxley and Summerdale (inside/outside of city limits) **Active**
4. Bromley, Carpenter, Crossroads, Hurricane, Spanish Fort (inside/outside city limits) Stapleton, Steelwood, Pine Haven, Whitehouse Forks **Active**
5. Barnwell, Clay City, Fairhope (outside city limits), Marlow, and Magnolia Springs (inside/outside city limits) **Starts February 2nd, 2026**
6. Lillian, Silverhill (inside/outside city limits), and Ono Island **Starts April 6th, 2026**
7. Bon Secour and Foley (outside city limits), Gulf Shores (outside city limits) **Starts June 1st, 2026**
8. Elsanor, Gateswood, Robertsedale (inside/outside city limits), Rosinton, Seminole **Starts August 3rd, 2026**
9. Bay Minette (inside/outside city limits), Blacksher, Georgetown, Gopher Hill, Latham, Little River, Lottie, Phillipsville, Rabun, Redtown, Stockton, Tensaw, and Vangordon **Starts October 5th, 2026**
10. Elberta (inside/outside city limits), Fort Morgan, Josephine, Miflin, Perdido Beach **Starts December 7th, 2026**

What to Recycle and Where

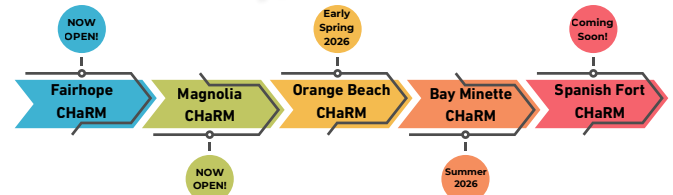
What Can You Recycle in Baldwin County and Where?

The Solid Waste Disposal Authority is committed to promoting environmental sustainability through our comprehensive recycling efforts. As part of our ongoing initiative, we are now accepting the following materials for recycling at our Materials Recovery Facility (MRF). Residents can conveniently recycle these items in several ways:

- **At any of our existing recycling drop-off locations** throughout the community
 - **At one of our upcoming CHaRM (Center for Hard-to-Recycle Materials) sites**, which will be opening soon to expand recycling options
 - **And through future curbside programs** that will be launched in additional areas across the county
- By utilizing these services, you are helping to save space in the landfill, conserve resources, and protect our environment for future generations. Stay tuned for updates on new locations and expanded services as we continue to grow our recycling efforts.



CHaRM Timeline



Contact Us!

Main Office:
251.972.6878

Susan Kilby-Aaron
Director of Recycle Services
Skilby@baldwincountyswda.org

Jennifer Doan
Recycling Outreach Coordinator
Jennifer.Doan@baldwincountyswda.org

Craig Jackson
MRF Manager
Craig.Jackson@baldwincountyswda.org

Thanks for Reading!

This is a monthly publication so be on the lookout for the next edition in January 2026!

If you would like to be added to the newsletter list please email Jennifer Doan at Jennifer.Doan@baldwincountyswda.org

For more waste and recycling information please visit: baldwincountyswda.org